

Annual Report



Logan-Rogersville Fire
Protection District
3427 S. State Highway 125
Rogersville, MO 65742
(417) 753-4265

Year 2015

“Exceptional Service with
Compassion & Accountability”

**LOGAN-ROGERVILLE FIRE
PROTECTION DISTRICT PERSONNEL**

DIRECTORS

Doug Climer, President
Jill Elsey-Stoner
Bart Andrews
Bryan Batey
David Adair

SECRETARY

Angela Carlberg

FIRE CHIEF

Richard Stirts, Jr.

DEPUTY CHIEF

Travis Trent

ASSISTANT CHIEFS

Russ Lafferty Tim Clarkson Robert Talburt

CAPTAINS

Ryan Turner Jeff Brannock Mike Robinson
Tyler Buchanan Grant Peters

EQUIPMENT OPERATORS

Andy Bean Andrew Cole Kyle Heminger
Jesse Gearhart Charles Wilder Lance Callahan

**LOGAN-ROGERVILLE FIRE
PROTECTION DISTRICT PERSONNEL**

FIREFIGHTERS

Conner Cooper
Chris Wescoat
Josh Jackson
Susan Velier
Landon Snyder
Ian George
Zach Stirts
Zach Schwartz
Matt Arnold
Jordan Acres

Daniel Gomes
Spike Parnell
Matt Savage
Joey McLain
Mark Hensley
Roy Harris
Chris Dishman
Bri Parnell
Kyle Bates

David Driskell
William Cook
Josh Donham
Matt Ferguson
Jon Bartelsmeyer
Gerry Gillenwaters
Ty Johnson
Triston Hunter
Joe Richter

CADETS

Weston Miekly Landon Maurer

CHAPLAIN

Doug Thomas Blake Loveland

LOGAN-ROGERVILLE FIRE PROTECTION DISTRICT PERSONNEL

OLD TIMERS

Doug Climer, November 1983
Russ Lafferty, November 1986
Rich Stirts, May 1986
Travis Trent, August 1994
Rob Talburt, November 1994
Zachary Stirts, February 1999
Jill Elsey-Stoner, April 2000
Timothy Clarkson, October 2000
David Driskell, March 2001
Doug Thomas, July 2003
Lance Callahan, December 2004
Grant Peters, June 2006
Gerry Gillenwaters, July 2006
Jon Bartelsmeyer, October 2007
Angela Carlberg, October 2007
Blake Loveland, November 2007
Landon Snyder, April 2009
Josh Donham, July 2009
Tyler Buchanan, October 2009
Andy Bean, April 2010
Chris Wescoat, August 2010
Mark Hensley, March 2011
Bart Andrews, May 2012
Matt Ferguson, August 2012
Ryan Turner, September 2012
Roy Harris, September 2012
Ian George, November 2012
Jeff Brannock, January 2013
Susan Velier, June 2013
Joey McLain, June 2013
Chris Dishman, March 2014
Landon Maurer, March 2014
Bryan Batey, May 2014
Triston Hunter, May 2014
Mike Robinson, June 2014
Andrew Cole, June 2014
Kyle Heminger, June 2014
Charles Wilder, June 2014
Josh Jackson, June 2014
William Cook, August 2014

**LOGAN-ROGERVILLE FIRE
PROTECTION DISTRICT PERSONNEL**

ROOKIES

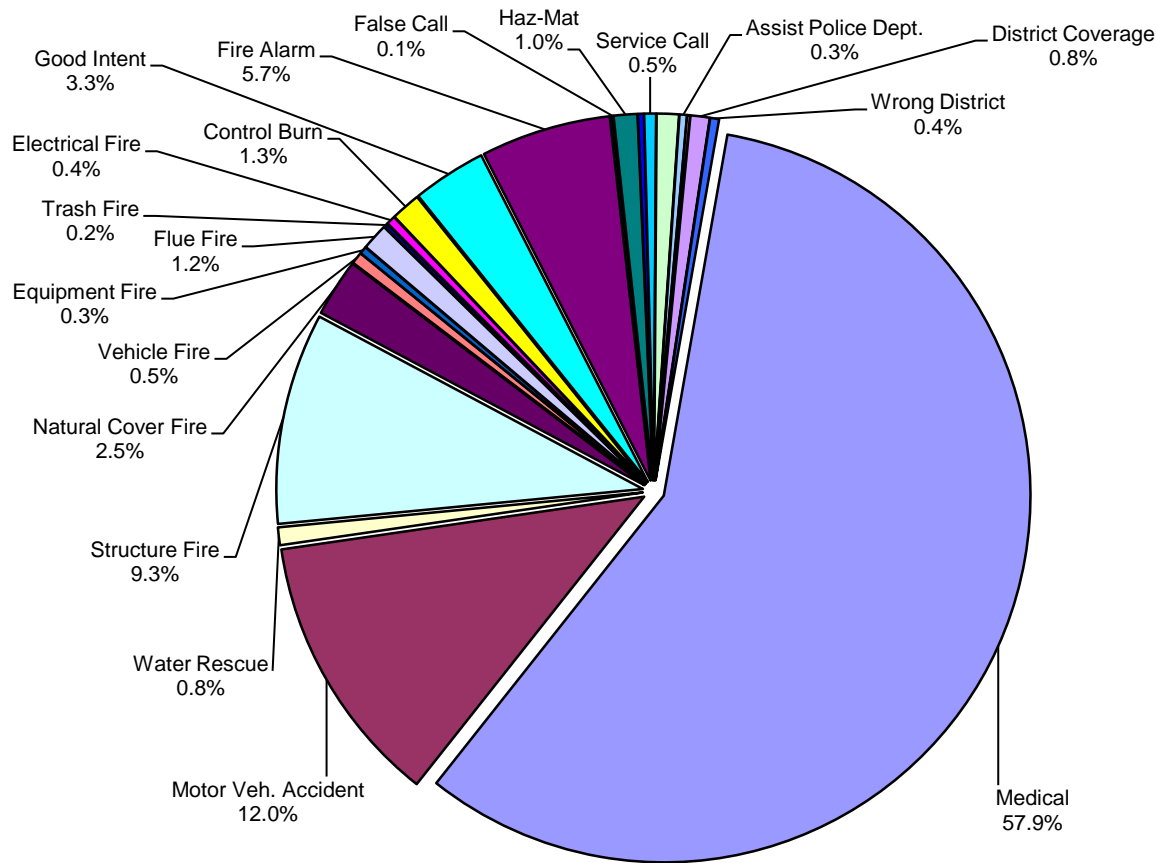
Jesse Gearhart, January 2015
Daniel Gomes, January 2015
David Adair, May 2015
Matt Savage, May 2015
Spike Parnell, August 2015
Matt Arnold, September 2015
Kyle Bates, September 2015
Weston Miekly, September 2015
Joe Richter, November 2015
Jordan Acres, November 2015
Conner Cooper, November 2015
Ty Johnson, December 2015
Bri Parnell, December 2015



LOGAN-ROGERSVILLE FIRE PROTECTION DISTRICT

3427 South State Hwy 125
Rogersville, MO 65742
(417) 753-4265

TYPE AND NUMBER OF EMERGENCY CALLS RUN DURING THE YEAR OF 2015



Type	# of Calls	Percentage
Medical	889	57.9%
Motor Veh. Accident	185	12.0%
Water Rescue	12	0.8%
Structure Fire	143	9.3%
Natural Cover Fire	39	2.5%
Vehicle Fire	8	0.5%
Equipment Fire	5	0.3%
Flue Fire	18	1.2%
Trash Fire	3	0.2%
Electrical Fire	6	0.4%
Control Burn	20	1.3%
Good Intent	50	3.3%
Fire Alarm	88	5.7%
False Call	1	0.1%
Haz-Mat	16	1.0%
Storm Damage	4	0.3%
Service Call	8	0.5%
Animal Rescue	0	0.0%
CO Alarm	15	1.0%
Fire Investigation	0	0.0%
Assist Police Dept.	5	0.3%
Weather Watch	2	0.1%
District Coverage	13	0.8%
Air Plane Crash	0	0.0%
Wrong District	6	0.4%

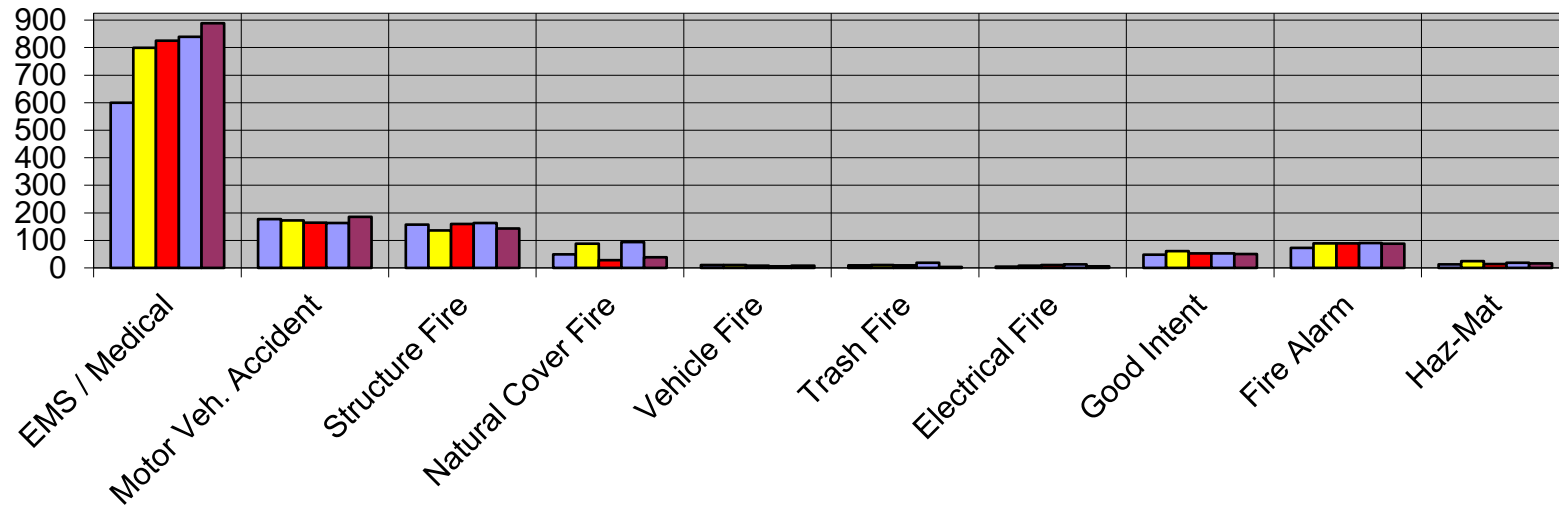
Total Number: 1536



LOGAN-ROGERSVILLE FIRE PROTECTION DISTRICT

3427 South State Hwy 125
Rogersville, MO 65742
(417) 753-4265

TYPE OF EMERGENCY CALLS PER YEAR > 2011 THROUGH 2015 <



■ 2011 ■ 2012 ■ 2013 ■ 2014 ■ 2015

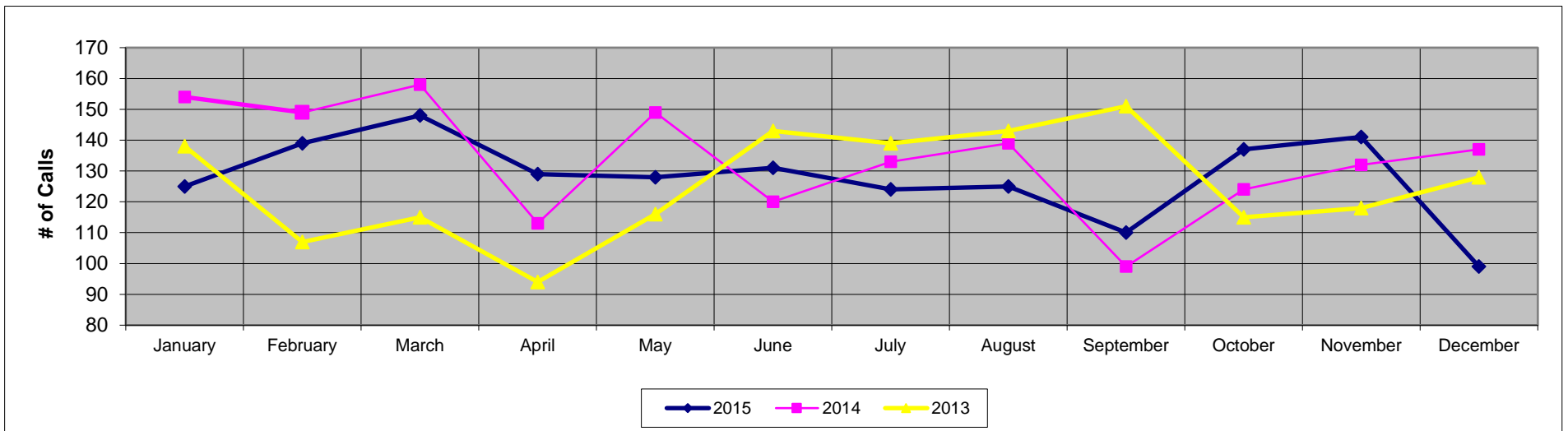
Type	2011	2012	2013	2014	2015
EMS / Medical	600	799	825	839	889
Motor Veh. Accident	177	172	164	163	185
Structure Fire	157	136	159	163	143
Natural Cover Fire	49	88	28	94	39
Vehicle Fire	11	10	8	6	8
Trash Fire	9	11	9	19	3
Electrical Fire	4	8	10	13	6
Good Intent	48	61	53	53	50
Fire Alarm	73	89	89	90	88
Haz-Mat	13	25	14	19	16



LOGAN-ROGERSVILLE FIRE PROTECTION DISTRICT

3427 South State Hwy 125
Rogersville, MO 65742
(417) 753-4265

NUMBER OF EMERGENCY CALLS PER MONTH > 2013 THROUGH 2015 <



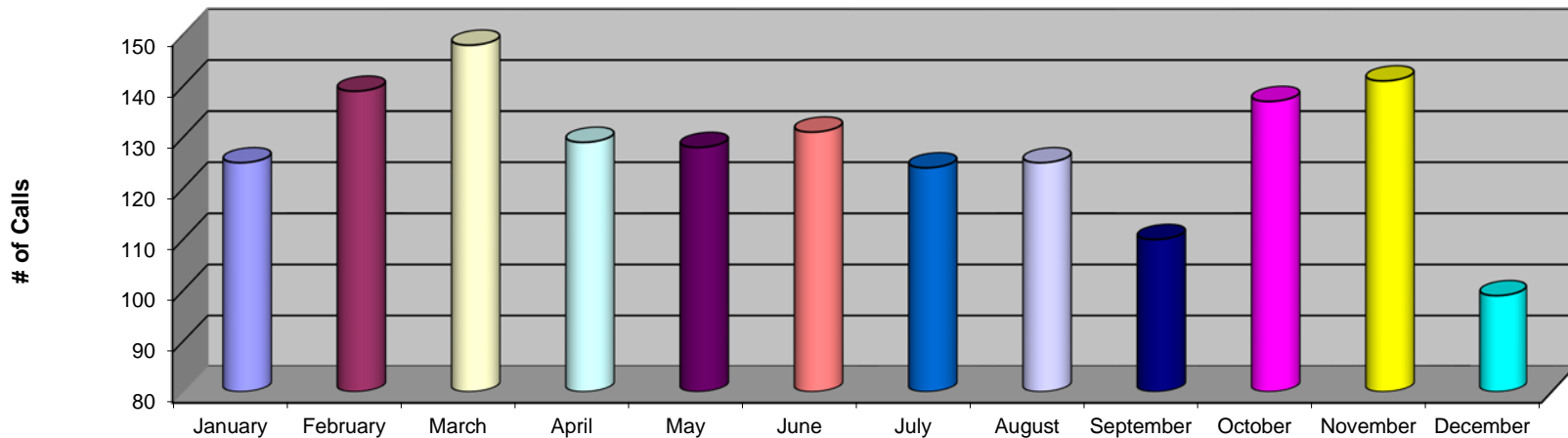
Month	2015	2014	2013
January	125	154	138
February	139	149	107
March	148	158	115
April	129	113	94
May	128	149	116
June	131	120	143
July	124	133	139
August	125	139	143
September	110	99	151
October	137	124	115
November	141	132	118
December	99	137	128



LOGAN-ROGERSVILLE FIRE PROTECTION DISTRICT

3427 South State Hwy 125
Rogersville, MO 65742
(417) 753-4265

NUMBER OF EMERGENCY CALLS PER MONTH DURING THE YEAR OF 2015



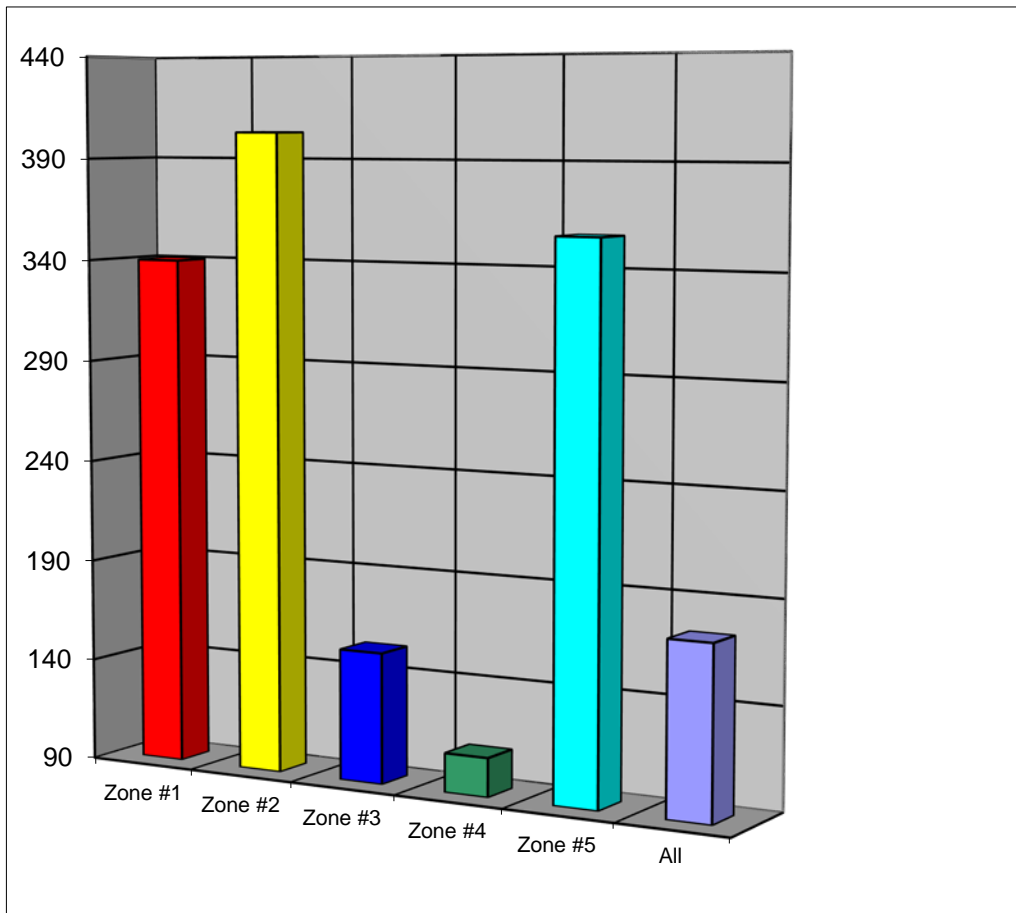
Month	2015
January	125
February	139
March	148
April	129
May	128
June	131
July	124
August	125
September	110
October	137
November	141
December	99



LOGAN-ROGERSVILLE FIRE PROTECTION DISTRICT

3427 South State Hwy 125
Rogersville, MO 65742
(417) 753-4265

EMERGENCY CALLS RUN PER STATION ZONE DURING THE YEAR OF 2015



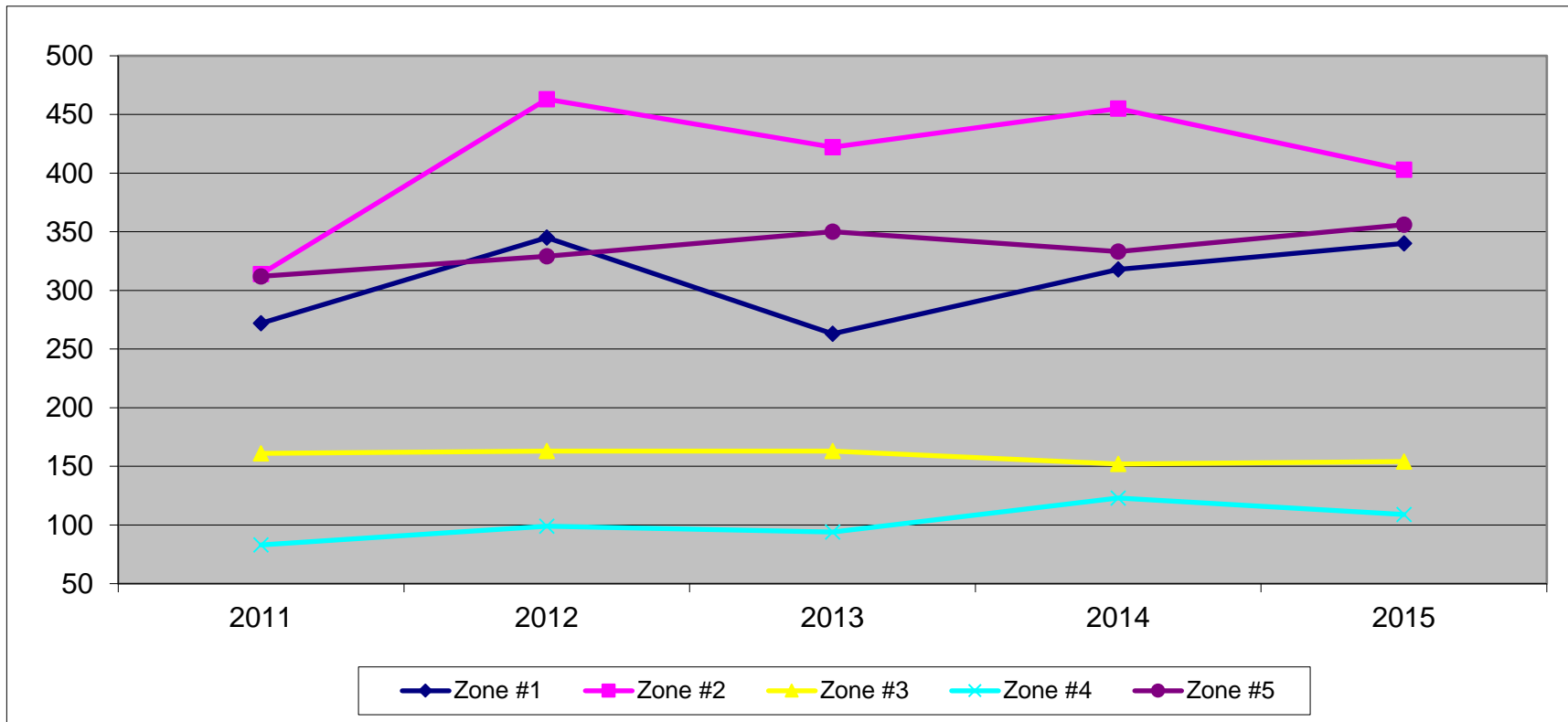
Totals					
Zone #1	Zone #2	Zone #3	Zone #4	Zone #5	All
340	403	154	109	356	174



LOGAN-ROGERSVILLE FIRE PROTECTION DISTRICT

3427 South State Hwy 125
Rogersville, MO 65742
(417) 753-4265

EMERGENCY CALLS RUN PER STATION ZONE > 2011 THROUGH 2015 <



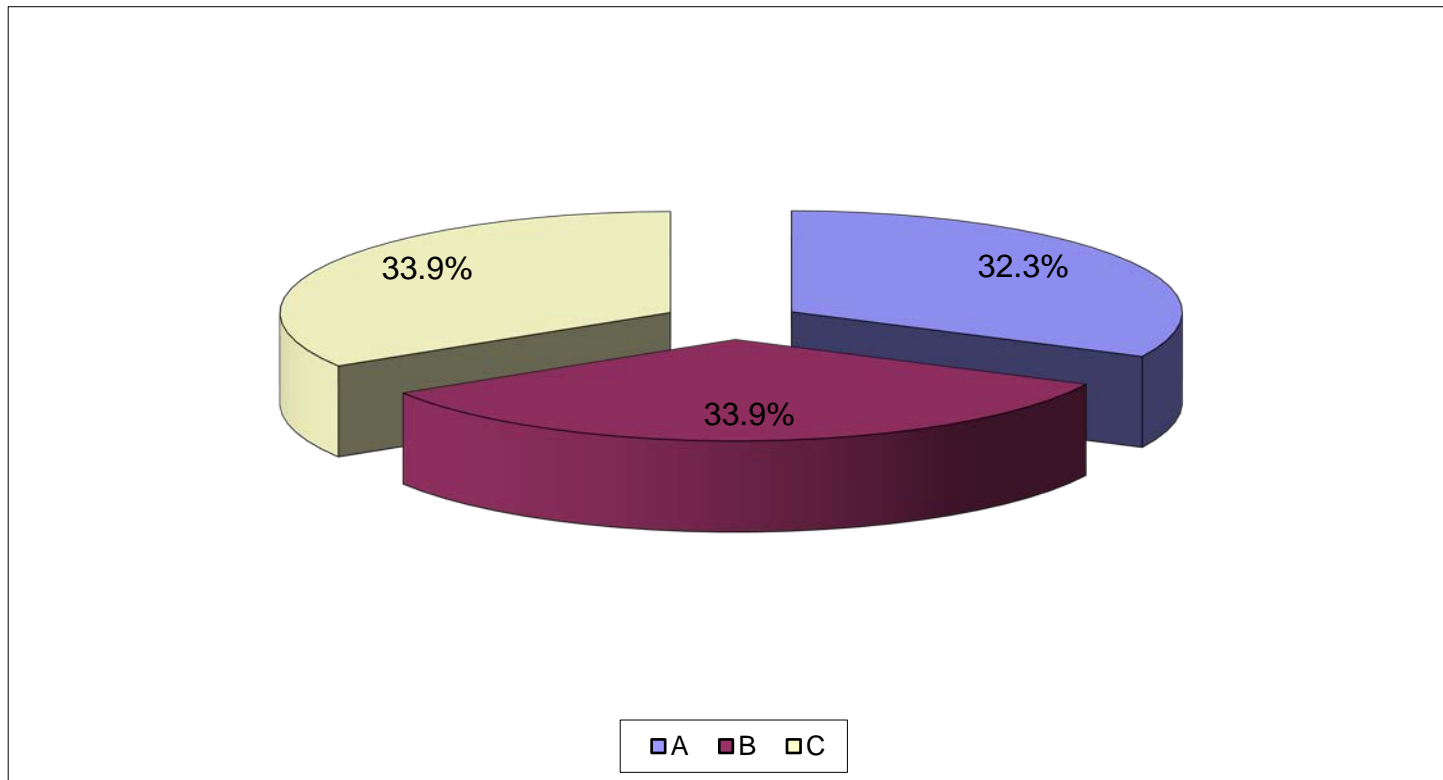
STATION ZONE	2011	2012	2013	2014	2015
Zone #1	272	345	263	318	340
Zone #2	314	463	422	455	403
Zone #3	161	163	163	152	154
Zone #4	83	99	94	123	109
Zone #5	312	329	350	333	356



LOGAN-ROGERSVILLE FIRE PROTECTION DISTRICT

3427 South State Hwy 125
Rogersville, MO 65742
(417) 753-4265

EMERGENCY CALLS RUN PER SHIFT DURING THE YEAR OF 2015



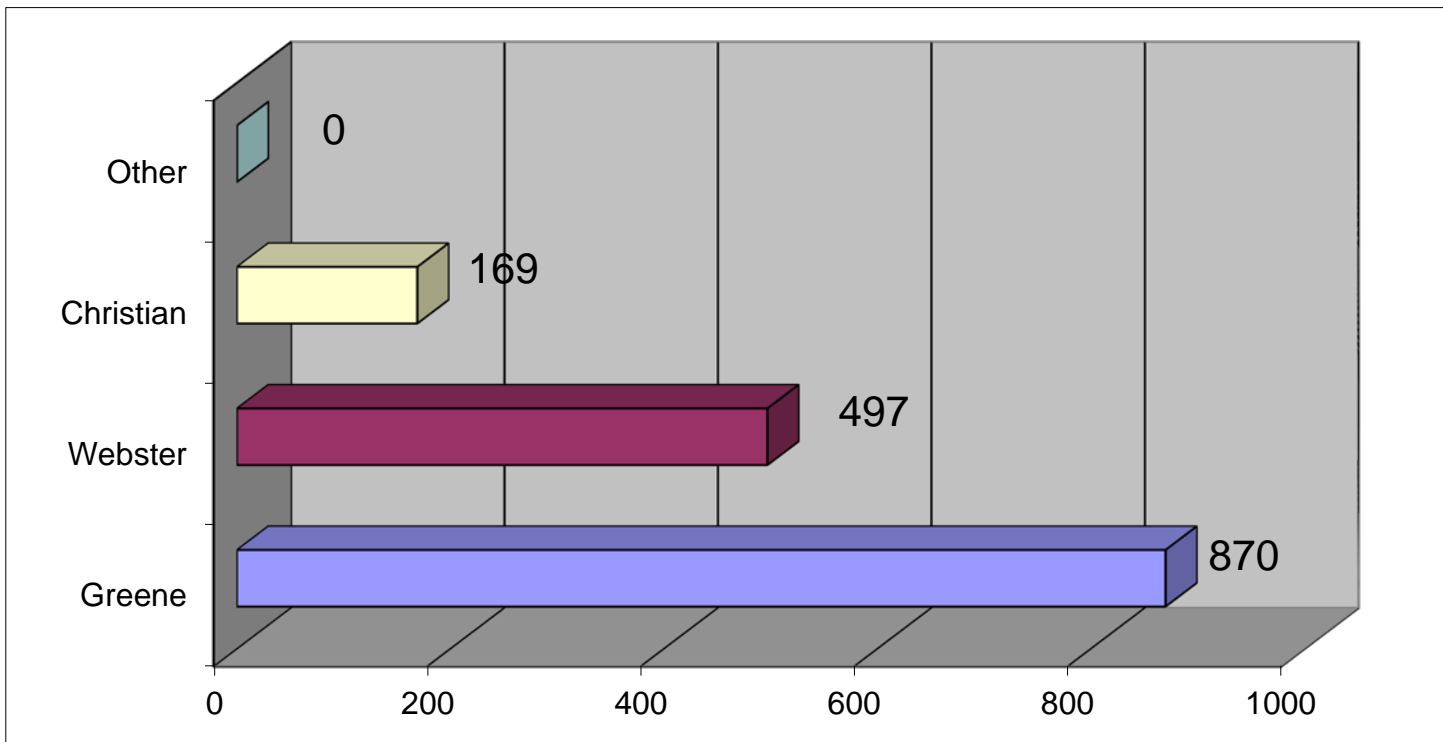
Shift	# of Calls	Percent
A	496	30.9%
B	520	32.4%
C	520	32.4%



LOGAN-ROGERSVILLE FIRE PROTECTION DISTRICT

3427 South State Hwy 125
Rogersville, MO 65742
(417) 753-4265

EMERGENCY CALLS RUN PER COUNTY DURING THE YEAR OF 2015



County	# of Calls	Percent
Greene	870	54.14%
Webster	497	30.93%
Christian	169	10.52%
Other	0	0.00%



LOGAN-ROGERSVILLE FIRE PROTECTION DISTRICT

3427 South State Hwy 125
Rogersville, MO 65742
(417) 753-4265

EMERGENCY CALLS RUN PER APPARATUS DURING THE YEAR OF 2015

Apparatus	2015	2014	2013	2012	2011	2010	2009	2008
Brush 223	227	249	198	159	19	14	29	43
Brush 321	78	51	32	73	83	40	84	119
Brush 422	11	73	31	40	51	44	103	105
Engine 334	129	95	71	64	13	8	22	54
Engine 435	130	144	88	110	82	54	384	89
Engine 233	496	600	748	903	697	724	262	352
Engine 531	4	3	0	1	0	5	5	0
Engine 584	404	391	689	709	568	595	547	456
Rescue 211	4	10	1	3	3	4	10	177
Service 403	594	517	492	530	316	282	324	432
Service 302	320	412	412	451	386	343	308	-
Service 201	21	4	3	8	11	0	25	-
Tanker 543	0	2	1	3	4	11	7	3
Tanker 142	29	49	38	50	53	57	71	34
Tanker 341	30	38	13	25	10	23	31	39
Tanker 444	0	0	0	0	0	0	0	5
Truck 151	7	13	5	6	7	2	15	-



LOGAN-ROGERSVILLE FIRE PROTECTION DISTRICT

3427 South State Hwy 125

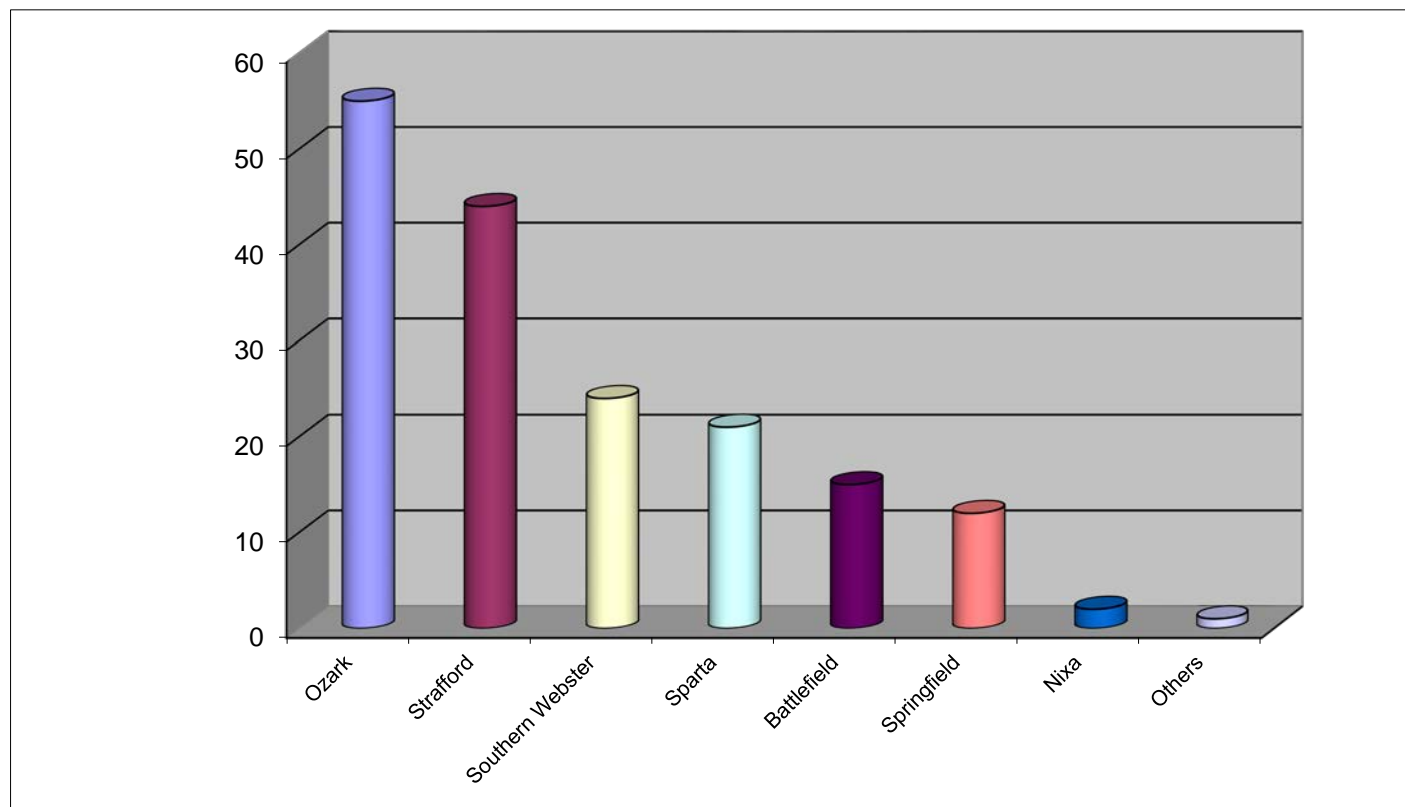
Rogersville, MO 65742

(417) 753-4265

NUMBER OF CALLS IN WHICH MUTUAL AID WAS PROVIDED DURING THE YEAR OF 2015

Departments That We Provided Aid To During Year 2015:

Department	# of Calls
Ozark	55
Strafford	44
Southern Webster	24
Sparta	21
Battlefield	15
Springfield	12
Nixa	2
Others	1
Total:	174





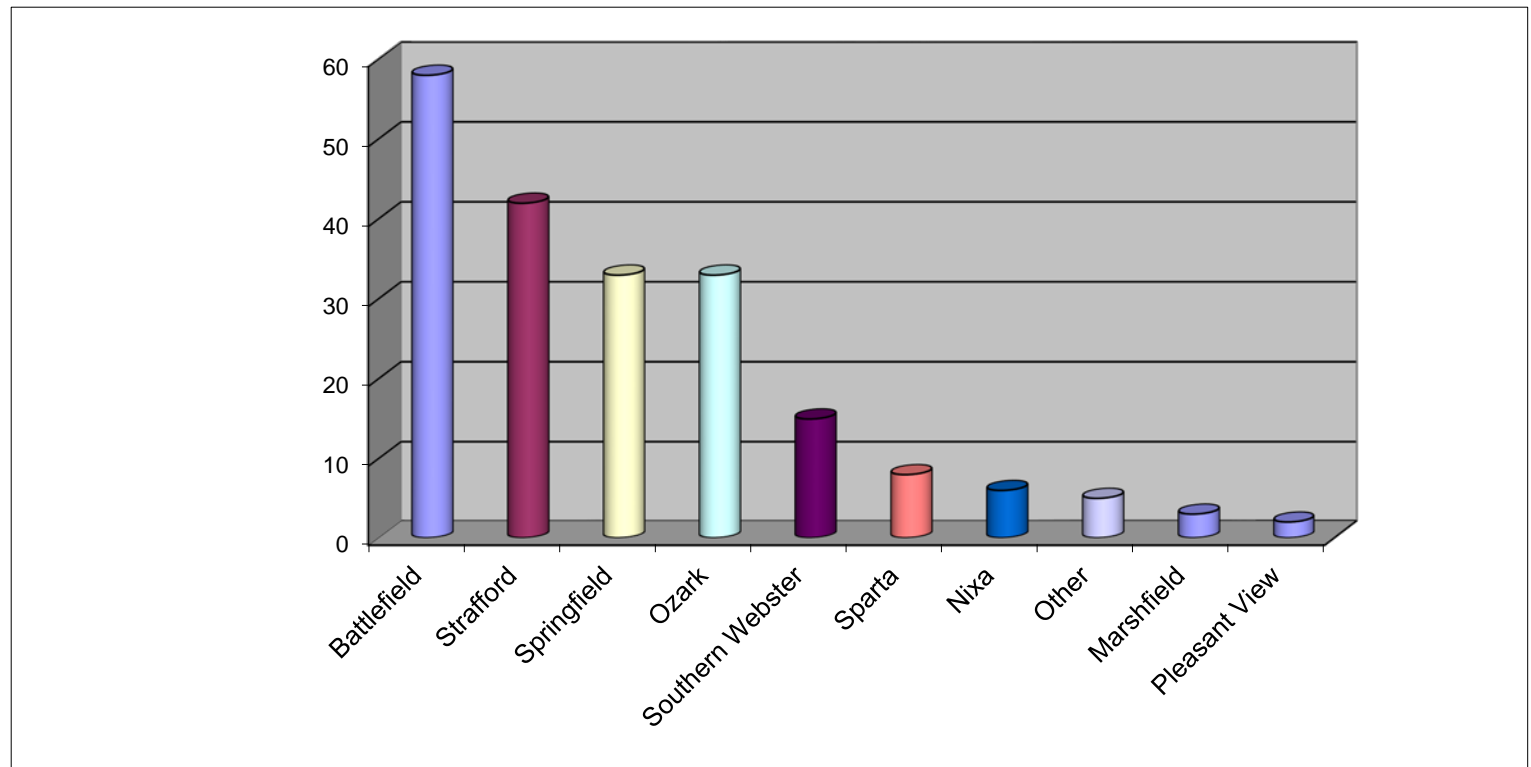
LOGAN-ROGERSVILLE FIRE PROTECTION DISTRICT

3427 South State Hwy 125
Rogersville, MO 65742
(417) 753-4265

NUMBER OF CALLS IN WHICH MUTUAL AID WAS RECEIVED DURING THE YEAR OF 2015

Departments That We Received
Aid From During Year 2015:

Department	# of Calls
Battlefield	58
Strafford	42
Springfield	33
Ozark	33
Southern Webster	15
Sparta	8
Nixa	6
Other	5
Marshfield	3
Pleasant View	2
Total:	205

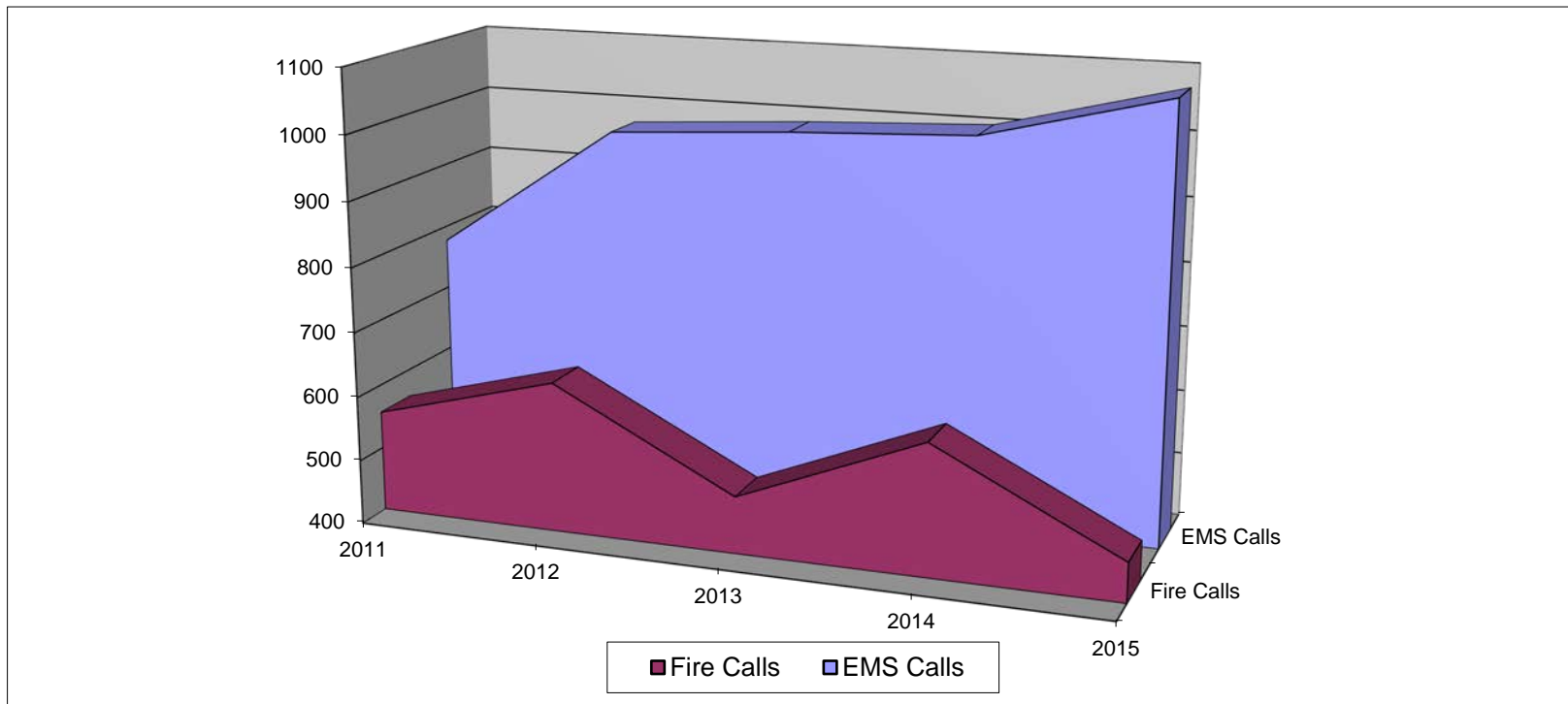




LOGAN-ROGERSVILLE FIRE PROTECTION DISTRICT

3427 South State Hwy 125
Rogersville, MO 65742
(417) 753-4265

TOTAL RESPONSE OF EMS VS. FIRE CALLS > 2011 THROUGH 2015 <



Year	2011		2012		2013		2014		2015	
	No. of EMS Calls	Percentage	No. of Fire Calls	Percentage	No. of EMS Calls	Percentage	No. of Fire Calls	Percentage	Total Calls Per Year	
2011	777	58.2%	557	41.8%	1334					
2012	971	60.5%	633	39.5%	1604					
2013	989	66.9%	489	33.1%	1478					
2014	1002	62.4%	605	37.6%	1607					
2015	1074	69.9%	462	30.1%	1536					



LOGAN-ROGERSVILLE FIRE PROTECTION DISTRICT

3427 South State Hwy 125
Rogersville, MO 65742
(417) 753-4265

Truck Maintenance Report 2015

	FUEL COST	REPAIR COST	TOTAL COST
B223	\$ 961.21	\$ 487.15	\$ 1,448.36
B321	\$ 862.13	\$ 987.64	\$ 1,849.77
B422	\$ 1,310.81	\$ 1,497.71	\$ 2,808.52
CAR-1	\$ 3,377.01	\$ 1,684.08	\$ 5,061.09
CAR-2	\$ 4,669.18	\$ 1,560.46	\$ 6,229.64
INSP-1	\$ 2,866.28	\$ 1,958.98	\$ 4,825.26
E435	\$ 1,845.57	\$ 3,246.73	\$ 5,092.30
E233	\$ 7,842.99	\$ 15,530.10	\$ 23,373.09
E531	\$ 113.30	\$ 36.72	\$ 150.02
E334	\$ 834.62	\$ 4,916.19	\$ 5,750.81
E584	\$ 7,235.20	\$ 25,082.82	\$ 32,318.02
R211	\$ 340.36	\$ 1,358.34	\$ 1,698.70
S403	\$ 2,517.40	\$ 1,075.86	\$ 3,593.26
S302	\$ 2,678.73	\$ 770.87	\$ 3,449.60
S201	\$ 875.21	\$ 9.99	\$ 885.20
S212	\$ 1,140.20	\$ 79.81	\$ 1,220.01
T543	\$ 50.00	\$ 298.67	\$ 348.67
T142	\$ 714.51	\$ 121.95	\$ 836.46
T341	\$ 557.80	\$ -	\$ 557.80
T444	\$ -	\$ -	\$ -
TK151	\$ 1,095.70	\$ 2,183.86	\$ 3,279.56
GATOR	\$ -	\$ -	\$ -
TOTAL	\$ 41,888.21	\$ 62,887.93	\$ 104,776.14



LOGAN-ROGERSVILLE FIRE PROTECTION DISTRICT

3427 South State Hwy 125
Rogersville, MO 65742
(417) 753-4265

Apparatus Summary For The Year 2015 APPARATUS SUMMARY

ENGINES	YEAR	MAKE
334	1992	FREIGHTLINER
435	2000	INTERNATIONAL
233	2010	KME PREDATOR
584	2006	KME PREDATOR
531	1973	FORD
RESCUES	YEAR	MAKE
211	1995	INTERNATIONAL
BRUSH	YEAR	MAKE
422	1995	FORD
321	1993	FORD
223	2011	CHEVROLET
TRUCK	YEAR	MAKE
151	2001	PIERCE DASH
TANKER	YEAR	MAKE
543	1987	GMC
142	1992	INTERNATIONAL
341	1996	INTERNATIONAL
444	1971	GMC
SERVICE	YEAR	MAKE
CAR 1	2015	CHEVROLET
CAR 2	2015	CHEVROLET
INSP 1	2009	CHEVROLET
403	2004	FORD
302	2005	CHEVROLET
201	2005	FORD
212	2001	FORD
SERVICE TRAILER	2002	HAULMARK
PUBLIC ED TRAILER	2011	LOOK